

TBF of Connecticut

The Bass Federation of Connecticut

***** April 2010 Monthly Newsletter *****

Spring is here - Finally

We have the boat out of mothballs, hooks sharpened, line respooled, tackle all organized, applications in for the first TBF trail event....

Let's get out there & fish!

TBF of CT Minutes of monthly meeting held March 18, 2010

Present were: Southern Ct.; Bio Bass; Valley Angler; Southeast Bass; Schaghticoke B/M.

Jerry N. made a motion to accept the minutes from the last meeting as published; second by Larry M.- motion was passed.

Treasurer's Report: Club dues are all accounted for and up to date. Last month's bal was overstated by \$600.00. This month's report shows the correction.

Youth Report: We now have 13 junior members - 2 in the younger age group and 11 in the older group. Rich Schumacher requested info on the TBF from Fred to help him put together a write up to show potential Junior Sponsors.

Shirts and jackets have been ordered from Ranger and Fred will follow up on the status of the order.

Environmental Report: No report.

Tournament Report: Larry is looking into the funds that have been collected in the past from the Tournament Trail. What should be done with it.

A motion was made by Jerry N.; second by Rich S.; to accept the committee reports. Motion passed.

OLD BUSINESS:

Website: The domain name and the hosting fees have been renewed and paid for the next two years by Amy. A motion was made by Jerry N. and a second by Larry M. to reimburse Amy the \$142.00 for this TBF expense. The vote passed.

Rich Schumacher's proposal to change the ranking of the State Team members that qualify from the C Division Trail. The proposal was to have the C Division qualify as #1; #7; #11; #12 on the state team. The vote was taken and this change passed.

Tournament Rules will be in the next newsletter.

The two spring fishing shows went well. We gave away a lot of information packages and answered many questions.

Updated By-Laws will be handed out at the April meeting.

NEW BUSINESS:

The guest application was brought up and suggested that we offer interested potential members a chance to fish as a guest. A motion was made by Larry N.; second by Rich S. to continue this into 2010. The motion passed.

April 10th & 11th Cabela's is having a Fishing Classic weekend. We have been offered a booth at this event.

Jim Marenzana has had personal issues he has been attending to and has not responded to Fred's calls. He finally returned one of Fred's call to say he would like to stay on the State Team and be V.P. - he will be back next month.

Rich Schumacher submitted a request for \$500.00 to fund the youth division. It was submitted to the executive board. Amy spoke of fundraisers for the Junior Club.

Joe R. asked about 50/50 raffle tickets. Jerry N. said he would bring some in.

Larry M. requested the expenditure of \$35.00 to purchase two telescopic light poles for the check in and out boats to attach flags to highlight their boats. Larry made a motion; Rich S. second; the vote passed.

Adjourned 8:30pm

Respectfully submitted,

Amy Roberts-Perry TBF of CT Secretary

Presidents Corner:

Hi everybody. It's April now and that means fishing season (without ice-fishing gear is just about here. In a week and a half (about) we'll be heading off to the Nationals and I'll be coming back with all of the updates from our sponsors, but until then I don't have much new on that front. This week we did receive the shirts and jackets from Ranger for our kids winners, and they should be quite happy with them.

If you have been paying attention to the web-site you are familiar with the press-release from TBF National, concerning the high school teams fishing tournament, coming up later this year. The intention is to promote this event in any way that we can. We all know that the future of tournament fishing lies with the kids who will be coming up through our ranks and this is a perfect way to get them interested. While it is a little late for this year's event, it is still possible to send a team or a number of teams if anyone knows of some youth who are interested in forming a high school club and moving forward in a timely enough manner. If anyone knows of someone who's interested, give me a call.

I want to spend a few minutes now talking about our upcoming tournament season. The first thing that comes to mind is our tournament trail events. By now everyone knows that we have a new Tournament Director. Larry is committed to making our trail events run as smoothly as possible, but he is going to need everyone's help to do so. At each tournament all of the fishermen will be given an itinerary, so that there are no questions as to how the tournament will be run. This will include a list of names with cell-phone numbers to contact in case of problems. Everyone by now knows that all of the boats are supposed to be in the water

one half hour before the start of the tournament. This year if you have not registered at least fifteen minutes before the start of the tournament, you will have to wait until after the rest of the boats take off before you can launch. This is to insure that we have a timely start at every tournament. For those people who have made a habit of showing up late for tournaments, it could stop you from participating this year. Accidents and delays happen on occasion to everyone, but not generally to the same person at every tournament.

At the end of the tournament it is important that you allow the Tournament Director and Committee to get off the water so that they can set up the scales and start the weigh-in. We understand that everyone wants to get off the water and watch the entire weigh in, but if you don't let the tournament officials get set up there won't be a weigh-in. It will take less than five minutes for the entire committee to be off the water and get their trucks and boats out of the water, if everyone cooperates, but if two or three boats block up the ramp for a short time, it could easily delay the weigh-in fifteen or twenty minutes. We have done well in the past to have quick and efficient weigh-ins, but we can and will do better this year. Please work with us, it is being done to make your tournament a more pleasant one.

See you on the water!

Fred

TBF of CONNECTICUT

Tournament Trail Entry Form 2010

www.ct-tbf.com

___ A Division \$30.00 ___ B Division \$15.00 ___ Boater ___ Non Boater

___ April 18, Sunday Lake Lillinonah - Steele Bridge

Postmarked by April 8th 7am - 3pm

___ May 8, Saturday Lake Zoar - State Launch

Postmarked by April 28th 7am - 3pm

___ June 6, Sunday Ct. River - Haddam Meadows

Postmarked by May 27th 7am - 3pm

___ July 10, Saturday Lake Congamond - Southwick, Ma

Postmarked by June 30th 7am - 3pm

___ August 1, Sunday Candlewood Lake - Squantz Pond

Postmarked by July 22nd 7am - 3pm

Angler: _____ Club: _____

Street Address: _____

City: _____ State: ___ Zip: _____ Cell Phone: _____

TBF#: _____ FLW#: _____ Boater's Certificate #: _____

Boat make & model: _____ Registration#: _____

Color: _____ Length: _____ H.P. Rating: _____ H.P. _____

Copy of Insurance: _____ **** Only have to supply insurance info with first tournament entry****

In consideration of being accepted in this tournament, the undersigned, agrees to comply with all event rules and State regulations. The participant(s) expressly assumes all risks associated with the event(s) and thereby releases & discharges The Bass Federation Inc., (TBF) it's parent, and affiliate companies, it's licensees and affiliates, including their state federations, and clubs, and all their respective officers, directors, agents, employees and stockholders, the tournament hosts, sponsors and tournament officials from all claims of death, injury and/or property damage incurred in conjunction with this/their event. I agree my picture and likeness can be used on the BTF website and in promotions for TBF of CT. All boaters must have current boat registration & a minimum of #300,000 liability insurance coverage. I have read and understand the TBF of CT tournament rules. I agree to abide by these rules during the tournament. I am a member in good standing with National TBF, FLW and TBF of CT. I understand the application must be postmarked as stated above. **ALL TOURNAMENT ENTRIES MUST BE ON SEPARATE FORMS EVEN IF YOU ARE ENTERING ALL FIVE TOURNAMENTS. (Five entries - five applications) FILLED OUT COMPLETELY... NO EXCEPTIONS.... OR THE WILL BE RETURNED.**

Angler's signature: _____

Mail to: Larry Mansy P.O. Box 21 Fairfield, Ct. 06824 make checks out to "TBF OF CT"

If you are entering as a club, have members fill out applications and send entry fees and applications to the Tournament Director in one packet. 50% of your club needs to fish to be able to be pre-paired as a club. Otherwise the Tournament Director will pair you at random and will post the pairings on the ct-tbf message board no less than 36 hours before a tournament.

If you are entering the "C" Division the \$75.00 entry fee must accompany your FIRST application of the tournament year. It should be a separate check payable to TBF of CT with C Division entry fee written in the memo area on the check.

Check # _____ Pre-paired with: _____

TBF of CONNECTICUT

Guest Tournament Trail Entry Form 2010

(Application and fee must be postmarked 10 day before the tournament you are entering)

_____ B Division \$15.00 _____ Non-Boater _____ Boater

___ April 18, Sunday Lake Lllinonah - Steel Bridge 7am - 3pm

___ May 8, Saturday Lake Zoar - State Launch 7am - 3pm

___ June 6, Sunday Connecticut River - Haddam Meadows 7am - 3pm

___ July 10, Saturday Lake Congamond - Southwick, Ma. 7am - 3pm

___ August 1, Sunday Candlewood Lake - Squantz Pond 7am - 3pm

Angler: _____

Street: _____

City: _____ State: _____ Zip: _____ Cell Phone: _____

Email: _____ FLW#: _____

Boaters' Certificate#: _____ Copy of Ins: _____

Boat make & model: _____ Registration #: _____

Color: _____ Length: _____ H.P. Rating: _____ Actual H.P. _____

Mail to: Larry Mansy P.O. Box 21 Fairfield, Ct. 06824: Larry's cell: 203-858-6690

checks made out to "TBF of CT"

Having fully acquainted myself with the rules, in signing this application, and by my presence at the event, I hereby agree to be bound by and comply with all event rules and safety regulations. I expressly assume all risks associated with the events and I hereby release The Bass Federation Inc., (TBF) its partners and affiliate companies, and all its licensees and affiliates, including affiliated State & Provincial Federations, and clubs and all their officers, directors, agents, employees, and stockholders, the tournament hosts, sponsors and tournament officials from all claims of death, injury and/or property damage incurred in connection with this their event. If I am using a boat during the official practice days or during the tournament I certify that I now have or will obtain prior to the event, property damage\watercraft liability insurance having a limit of at least \$300,000.00. Said insurance must be issued by a reputable insurer and must cover injury and/or damage incurred in connection with this Tournament. Upon request, I will provide satisfactory evidence of that insurance. I hereby waive my rights of privacy or publicity with regards to the unconditional right to use my name, voice, photographic likeness, video and biographical information and fishing tips and instructions in connection with any reproduction of same, video\audio productions and/or articles and press releases by TBF, its partners or affiliate companies, and those acting under their permission, anywhere at any time, though any medium or media. I shall not be entitled to receive any royalties or other compensation in connection with such use. I further understand and agree that the tournament officials reserve the right to reject my application for any reason.

Angler's signature: _____ Print name: _____

Check # _____ Paired with: _____



TBF FEDERATION SPONSORS

The companies whose emblems appear on this page support the TBF Federation Tournament Trail. Because of their sponsorship throughout the year, your support of their products will be appreciated.



Catch More Fish.

WAL★MART
ALWAYS LOW PRICES.

Always.



CHEVY



EVINRUDE

LOWRANCE
We Lead, We Find, You Win.™





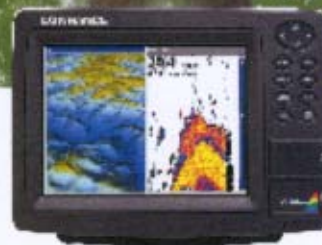
WHAT YOU SEE IS WHAT YOU CATCH

© 2007 Navico, Inc.

Choice. Performance. Flexibility.

With 7", 8" and 10" screens, best-in-class sonar performance and the exclusive SolarMax® color display, you can easily see the Lowrance difference – even in bright sunlight. Lowrance LCX also offers the widest selection of high-detail mapping options. Now with Navionics® Platinum compatibility, high-speed Ethernet networking and high-definition sonar recordings with the optional Broadband Sounder, it's easy to see why Lowrance is the hands-down favorite of top fishing pros. Find out more at www.lowrance.com.

A brand by Navico – Leader in Marine Electronics



LOWRANCE
Seize the Day

2010 TBF of Connecticut Tournament Trail

April 18th, Sunday, Lake Lllinonah (Steel Bridge)

May 8, Saturday, Lake Zoar (State Ramp)

June 6, Sunday, Ct. River (Haddam Meadows)

July 10, Saturday, Congamond Lake

August 1, Sunday, Candlewood Lake (Squantz)

August 28 & 29 - Two Day Championship

Day 1 - Ct. River (Haddam Meadows)

Day 2 - Candlewood Lake (Squantz)

****** All Tournaments from 7am - 3pm ******

Applications are available on the Tournament Applications page.

Tournament Director Larry Mansy

H:203-870-4670 C:203-858-6690

P.O. Box 21 Fairfield, Ct. 06824

mongomadness@optonline.net

TBF of CONNECTICUT - TOURNAMENT RULES (Revised April 2010)

This trail has been formulated for the grass-roots weekend angler. As such we are encouraging the participation of anglers who want once again to fish a tournament to learn and have a good time. Entry fees (and payouts) are relatively low and the tournament officials will work with the participants (whenever possible) so that all can have a good time. Unfortunately it is required to have some rules with which all must comply to insure fairness and safety. This trail has no interest in competing with others, only in helping to grow the sport and increasing participation for those who are currently left out.

TOURNAMENT PARTICIPATION AND REGISTRATION: Participation in any federation event is open to all members of the organization. Each participant is required to fill out and sign an application for each tournament. Each boater will be required to submit a copy of their boat insurance (minimum \$300,000 liability) prior to fishing their first tournament of the year. Tournament entries must be postmarked ten (10) days prior to the tournament. (Tournament Director and committee may, at their discretion, allow late entries)

REFUNDS: People who chose to withdraw from a tournament on or prior to the Tuesday immediately before the tournament, will be automatically reimbursed their entry fees. People who choose to withdraw from a tournament after the Tuesday before the tournament will be reimbursed only after approval of the Board of Directors at the next regularly scheduled T.B.F, monthly meeting (contestant must petition for the reimbursement at this meeting). Any monies which are not reimbursed will be utilized (at the Board of Directors approval) for the tournament trail, and or trophies.

TOURNAMENT PAIRINGS: For all tournaments (trail events) there will be a random pairing of the contestants by the tournament committee. Clubs who wish to fish as a club event may pair within the club, if 50% or more of the club is fishing. Contestants will only be allowed to fish together two times during a tournament year. In each event the tournament committee will designate two boats as "open boats". These two boats will be left open (no non-boater) in case of emergency so that no non-boater is left on the shore. These boats will be picked at random and not more than one time during the tournament year. All other boats will have two contestants per boat.

BOAT EQUIPMENT: All boats must be in full compliance with state laws and Coast Guard regulations. All boats must have working kill switches (which must be worn at all times when the internal combustion motor is running). All boats must have a working mechanically aerated live well capable of holding and sustaining two limits of fish (Bass). Boats must be large enough to be safe and comfortable for two anglers and their equipment (as determined by the Tournament Director and committee). All boats must be equipped with a seat for the non-boater partner.

SAFETY AND SPORTSMANSHIP: Life jackets shall be worn by both competitors at all times when the internal combustion motor is running. The "kill switch" shall be affixed to the driver at all times when the internal combustion motor is running. All competitors shall comply with state laws (speeding etc.) at all times. When boating and fishing near other boats and people, maximum courtesy should be extended to all.

Anglers in the same boat shall not fish or handle the boat in a method which will put the other angler at a disadvantage. Use of alcohol or illegal drugs during tournament competition hours, will result in immediate disqualification. Drunkenness and un-sportsmanlike conduct at any tournament will be cause for disqualification and may result in disqualification from future tournaments. (to be determined by Tournament director, tournament committee and Board of Directors).

TACKLE AND EQUIPMENT: All fishing shall be with artificial baits only. Prepared baits (real shiners, crayfish etc.) shall not be allowed. Rods over 8 foot (96") long are not allowed. Spinning, Bait-casting and Spin-casting are all allowable fishing techniques. Fly fishing is not!! Fishermen are allowed to have a number of rods rigged and available for use but only one "wet-line" is allowed (one bait being actively fished). Trolling (hands free fishing using only a motor to move the bait) is not allowed in any tournament. All fish must be caught in a legal sporting manner. While the presence of communication devices is recommended (for emergency purposes), they are not to be used to converse with other competitors except for emergencies, as deemed by the Tournament Director and committee.

PERMITTED FISHING LOCATIONS: Fishing is allowed anywhere on the tournament lake (where legal), except within 50 feet of another competitor who's trolling motor is up and who is anchored in position. Anglers who feel that another boat is encroaching on the 50 foot rule must warn the offending anglers at that time. Anglers who allow one other person (within the tournament) to fish within the 50 foot zone are then obligated to allow any other boat or angler the same courtesy. No angler or boat may stop others from passing on otherwise navigable waters. Anglers may not leave the boat for the purpose of catching a fish, or fishing an area which is otherwise inaccessible by boat. Leaving the boat for dire circumstances (as determined by the Tournament Director and committee) is acceptable, but whenever possible the anglers should remain within sight of each other. All tournament boats must remain on the tournament water throughout the tournament day and all contestants must depart from and return to the check in point by boat (no trailering from other launch sites).

BOAT IDENTIFICATION AND CHECKPOINTS: Prior to the start of each tournament, there will be a check in for the contestants. At this point contestants will learn who their partners are (if they don't already know) and one contestant from each boat will draw a boat number (blind draw). These boat numbers are to remain with the boat throughout the day. All boats shall be in the water 30 minutes prior to the start of the tournament. Any boater who chooses to block the line and not launch their boat promptly will be sent to the back of the line - if the boater fails to comply he (she) will be disqualified and the entry fee will not be reimbursed. Boats will line up on the water and leave the launch site in numerical order. The first two boats and the last boat to leave will be Tournament Committee boats (the first two will be required to return to the ramp 15 minutes early to start the weigh in procedures).

At the end of the day all boats must check in with the tournament committee, (regardless of whether they caught any fish) and return their boat number (more than anything else this a safety issue to make sure that no boats are left on the water, so full compliance is required). In the event that a boat has to leave the water prior to the end of the tournament day, contestants are required to notify another tournament angler or tournament official of their intent and return the boat number.

It is the responsibility of the non-boating partner to remain with and help the boater at the end of the day until the boat is safely on the trailer and tied down (this does not apply if the boater chooses to launch at a different site and drive the boat to the tournament launch.) Failure of the non-boater to comply with this rule may result in disqualification from the current and future tournaments!!

SCORING AND PENALTIES: Tournament standings and final winners shall be determined by the weight of each anglers catch. Only Smallmouth and Largemouth Bass in compliance with state size limits may be weighed in. Any angler may request a "courtesy measure" to check a fishes compliance with size regulations and there will be no penalty (other than the loss of the questionable fish if it is short), however if an angler tries to weigh in a short fish the total catch will be disqualified. There will be a five fish limit for each angler (unless otherwise stated by the Tournament Director and committee prior to the start of the tournament). In the event that an angler has more than the prescribed limit in possession at any time, the Tournament Director and committee shall cull down to the prescribed limit starting with the largest fish and working down to the smallest fish. Any fish which appears to have been mangled, crushed or otherwise altered to give the appearance of being longer than 12 inches will be credited only at the discretion of the tournament committee.

Any fish presented for weigh in which is dead or cannot be completely revived with a reasonable effort shall receive a 4 ounce deduction as a "dead fish" penalty. All fish weighed in by any angler must be caught during the specified tournament hours on the specified tournament waters by the specified angler - any deviation from the above shall result in immediate disqualification and removal from the organization. Any angler who returns to the weigh in site late shall receive a penalty of 1 pound for each minute that they are late. Anglers who are fifteen or minutes late will have their total catch disqualified. Only live fish can be weighed in to qualify for the lunger award. In the event of a tie between two or more contestants, the winner will be determined by: 1. Total number of fish. 2. Big fish. 3. Coin flip.

ENTRY FEES AND PAYOUTS: There shall be two divisions in each of the trail tournaments as follow:

A. DIVISION - Entry fee 30.00

For each tournament entry \$3.00 to lunger, \$5.40 to Plaques, trophy, trail expense.,
\$21.60 to prize payouts - see below

Any checks written for tournament payouts, must be cashed within 60 days. Checks which are not cashed within that time will be null and void and the monies will be utilized (at the Board of Directors approval) for the tournament trail, and or trophies.

B. DIVISION - Entry fee 15.00

For each tournament entry \$2.00 to lunger, \$2.60 to Plaques, trophy, trail expense.,
\$10.40 to prize payouts - see below

1 - 15 contestants. Payouts - 1st. 60%, 2nd. 40%,
16 -25 contestants. Payouts - 1st. 50%, 2nd. 30%, 3rd. 20%,
Over 25 contestants. Payouts - 1st. 40%, 2nd. 30%, 3rd. 20%, 4th. 10%,

TOURNAMENT TRAIL POINTS: Tournament trail points shall be awarded in the following manner: For each tournament the first place contestant (determined by total weight of fish caught) shall receive 300 points, second place shall receive 298 points and 3rd thru last place shall decline in 2 point increments with people who catch no fish receiving 50 points less than the last person who caught fish. There will be separate standings for the two divisions. At the end of the year the overall standings (for each division) will be determined by total points accumulated throughout the year. There will be a drop tournament this year so that the top 4 finishes of the 5 tournaments will be counted for total year end points.

BOAT OPERATION AND EXPENSES: Each partner in the boat is entitled to 4 hours control of the boat. There should be a discussion and understanding prior to the start of the tournament. If a contestant does not choose to run the trolling motor, he (she) is still entitled to fish his (her) waters and to do so from the front of the boat. DURING ANY CONTESTANTS TIME , THEY WILL HAVE FULL CONTROL OF WHERE THE BOAT GOES AND HOW THEY FISH THE AREA!!! Failure to comply will result in immediate disqualification! Non-boaters are responsible to pay the boater to help offset some of the expenses of running the boat as follows: Boats under 100 horsepower - \$20.00. Boats over 100 horsepower - \$25.00. Failure to do so will eliminate the non-boater from fishing future tournaments until the situation is rectified.

PROTESTS: All protests must be filed with the Tournament Director prior to the closing of the scales. When a protest is filed the Tournament Director will choose a minimum of 3 uninvolved people (without ties to any of the parties concerned). These people will then listen to all sides of the story and make a determination as to the outcome.

STATE TEAM QUALIFYING 4 MEMBERS FROM THIS TRAIL - C - DIVISION: (To be eligible for the C. division qualifications an angler must pay a \$75.00 entry fee prior to fishing their first qualifying tournament.) Anglers who choose to fish the C. division of this years' trail will have their weights put in descending order, regardless of which division they fished, and the heaviest creel will be given 500 points. The next creel will get 498 ... right on down to the last creel weighed-in. If you fish and do not weigh in a keeper you will receive 50 points less than the last person who caught fish. At the end of the tournament season the top 4 points holders (with a drop tournament) will be members of that years State Team. #1 will be a boater. #6 will be in 7th position ; #3 & #4 will be 11th and 12th spots. If #2 , #3 or #4 want to better their position , they can fish the two day (pay the entry fee) and qualify in a higher position. If these anglers do not improve their position, they must pay the difference between the entry into "C Division:" and the two day qualifier by 10 days after the two day, in order to maintain their position earned from the trail.

Candlewood Spring Smallie Spectacular

Lattins Cove Ramp May 22, 2010 (Saturday) 7am - 3pm

Proceeds to benefit the TBF of CONNECTICUT

*Entry Fee \$100.00 per team
Optional Lunker Fee of \$20.00 per team
Launch position BY postmark of paid entry
TBF Open Rules apply - see back*

75% Payout to 10% of the field

Make checks payable to: TBF of CT

e-mail: mongomadness@optonline.net

Larry Mansy P.O. Box 21 Fairfield, Ct. 06824 203-858-6690

Candlewood Spring Smallie Spectacular May 22, 2010 - Entry Form

All entries **MUST** have two signatures - Attach a copy of current boat insurance policy.

In consideration of being accepted in this tournament, the undersigned releases and discharges TBF of CT, and its officers and its members from all claims, demands, rights of causes of action, present or future. Whether known, anticipated or unanticipated, and resulting from or arising out of incident to the undersigned participation in the TBF of CT Spring Smallie Spectacular..

Boater: _____ *Non-Boater* _____

Address: _____ *Address:* _____

Town: _____ *Town:* _____

State & zip _____ *State & zip:* _____

Phone: _____ *Phone:* _____

Signature: _____ *Signature:* _____

\$100.00 entry fee _____ *Optional lunker fee \$20.00* _____ *Amount enclosed:* _____

Make & model of Boat: _____ *Length:* _____

Boat Registration: _____ *H.P. rating* _____ *H.P. on boat:* _____

Entries to be postmarked by May 12, 2010 Sign up at the entry ramp with **CASH**.

1. THIS IS A TEAM TOURNAMENT. Teams consist of two anglers in one boat.
2. All contestants, ages 16 or older, must be Connecticut licensed fishermen.

TBF of CONNECTICUT

3. Live bait, trolling and ALCOHOLIC beverages are PROHIBITED. Artificial baits only.
4. Only one(1) rigged rod may be used at one time per contestant. Other rigged rods may be in the boat.
5. All bass must be caught live and in a conventional manner.
6. All fishing must be accomplished from the BOAT. Contestants cannot depart the BOAT to land a fish. All contestants must leave the official launch area by BOAT and return by BOAT.
7. Contestants who are NOT in the official launch area on time shall be DISQUALIFIED. An excuse given for tardiness will be considered by the Tournament Committee. If the excuse is voted acceptable, there will be no penalty.
8. Scoring will be determined by pounds to the one-hundredths. The tournament winners will be determined by total pounds and hundredths. Only LARGEMOUTH and SMALLMOUTH BASS will be weighed with an eight (8) fish limit.
9. ALL BASS will be a minimum of (12) twelve inches in length. Weighing in of short fish will result in a disqualification. One courtesy measure per team.
10. Ties will be broken in the following manner: 1) By weight of the largest fish. 2) By the total number of fish weighed.
11. Sportsmanship, courtesy, safety and conservation are expected from each participant. Each boat must have standard Coast Guard safety equipment.
12. Anglers have to wear their life jackets while the large motor is running.
12. Each boat must have a live well with working aerators; able to keep a full catch alive and well. The boat will also be equipped with a kill switch.
13. Boat numbers will be issued on receipt of paid entry. Boats will line up an idle in order to past the mouth of the Squantz Cove with out swamping the checkout boat!
14. The Tournament waters will be patrol by Tournament Judges, and they can be called upon to resolve any problems that might arise.
15. A quarter pound will be deducted for each dead fish and for each fish not released alive at the end of the Tournament. (If D.E.P. chooses to take a fish to study - you will not be penalized).
16. At the weigh-in, each team will weigh in their fish together to obtain their placement in the standings. (One member can bring their bag of fish to the scales while the other keeps the boat safe.)
Weigh-in will be to the lake side of the launch. Once you check in with the check-in boat, stage to the lake side of the launch - make sure you stay far enough away from the launch so boaters can drive up on the trailers without hitting waiting boats.
17. The TBF of CT reserves the right to refuse any application.

TBF of CONNECTICUT Affiliated Clubs: website: ct-tbf.com

Bass Finn-Addicts

Dominic Gambardella 6 Beverly Dr. North Haven, Ct. 06473 203-627-0633

Bass Hunters

Jim Marenzana 54 Hobson Ave. Bristol, Ct. 06010 860-582-9730

Bio Bass Anglers

Joe Rackiewicz 21 Birch Place Milford, Ct. 06460 203-878-8909

Midstate Bass Anglers

Jerry Marks P.O. Box 1604 Middletown, Ct. 06457 860-347-7240

Northern Ct. Bass Anglers

John Plonski 18 Field Rd. Enfield, Ct. 06082 860-745-7311

Schaghticoke Bass Masters

Rich Baker 31 Jonathan Dr. Roxbury, Ct. 06783 203-841-9201

Southeast Bass

Fred Perry P.O. Box 763 Killingworth, Ct. 06419 860-663-55

Southern Ct. Bass Anglers

Doug Marshall 8 Winston Ct. Milford, Ct. 06460 203-887-7798

Valley Bass Anglers

Chris Blanc Trumbull, Ct. 203-273-2212

TO ALL MEMBERS:

If you have an e-mail address please send an e-mail to

fram4tbf@sbcglobal.net

We are now putting our monthly newsletter on the website ct-tbf.com monthly.

We will send out an e-mail telling you it is up on the website.

TBF of CONNECTICUT STATE OFFICERS

President: Fred Perry 860-663-5557 e-mail: fram4tbf@sbcglobal.net

Vice Pres.: Jim Marenzana 860-582-9730 legendbass@comcast.net

Secretary: Amy Perry 860-663-3330 fram4tbf@sbcglobal.net

Treasurer: Rich Suhie 203-746-5155 asuhie5155@charter.net

Tourney Dir.: Larry Mansy 203-858-6690 mongomaddress@optonline.net

Environmental Dir.: Amy Perry 860-663-3330 fram4tbf@sbcglobal.net

Youth Director: Rich Schumacher 203-448-6775 shoey5408@charter.net

TBF Owned by those we serve , Dedicated to the sport of fishing



**INTIMIDATION
NEVER LOOKED
SO GOOD**

Turn up the heat with America's most innovative, total performance fishing machines. With more best-in-class features than anyother tournament rig, they've taken acceleration, handling, space, fishability, and all-out performance to even higher levels. Go ahead. Dare to dream. And join a whole new level of leadership. This is beyond evolution.

This is the Ranger Z-Comanche® series!



(800)899-0028

264 Hamburg Rd. • Lyme • CT • 06371

www.reynolds1859.com

Ranger
BOATS
rangerboats.com